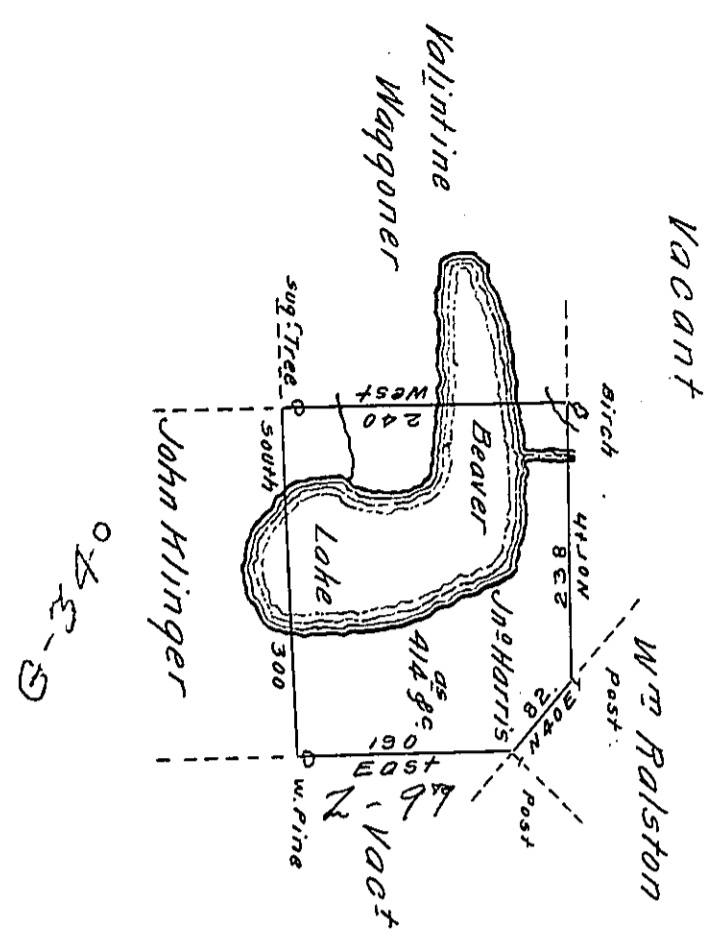


W



A Draft of a tract of land called Beaver Lake. Situate in the County of Luzerne, containing four Hundred & fourteen acres & allowance. Surveyed 22^d Day of August 1793 for John Harris by Virtue of A Warrant dated the 4th day of Jan^y. 1793.

To Daniel Brodhead Esq^r } by W^m Gray D.S.
 Surv^r Gen^l }

IN TESTIMONY that the above is a copy of the original remaining on file in the Department of Internal Affairs of Pennsylvania, made conformably to an Act of Assembly approved the 16th day of February, 1833, I have hereunto set my Hand and caused the Seal of said Department to be affixed at Harrisburg, this ninth day of March 1911.

Henry Houck
 Secretary of Internal Affairs.